

# Congratulations on your new balcony glazing!



Now you can finally enjoy your balcony all year round, regardless of the weather. We at Alnova are delighted to be a part of your home upgrade and are always here if you have any questions or need our help.

## Take advantage of our tips for making the most out of your glazed balcony:

- The glazing system provides good protection against wind and water, but there's no guarantee the balcony will be entirely draft-free or waterproof. The glazing is designed to drain away incoming water. During windy and rainy weather, these drainage holes can leak water, which will be discharged after the rainy weather stops, depending on the slope of the balcony tiles. Consider this when choosing furniture and equipment for your balcony.
- Our frameless enclosures have an air gap between the glasses of approximately 2-4 mm. If you desire a slightly tighter seal, you can purchase optional plastic sealing strips and install them yourself. Regardless of the model or brand you choose for your glazing, some noise may occur during moderate to strong winds.
- Consider fire safety and child safety when furnishing your balcony. Avoid placing too much fixed furniture on the balcony.
- If you wish to have sun protection for your balcony glazing, Alnova offer customized blinds as an option.
- When using flower boxes on the balcony, these should, in consultation with the property owner or manager, be installed on the inside of the glazing. In cases where the box is attached to the railing, choose a box made of rubber-coated aluminum or plastic.
- Many facades have joints and gaps where water can seep in, and during rain and wind, water may sometimes leak onto the balcony. This is not a fault in the glazing and must be solved in another way, such as through sealing or tinning. To solve the issue, you should first contact the property company that owns and/or manages the building or the construction company.
- Rainwater may sometimes contain a high pH-value due to building materials, such as balcony tiles, which can cause marks on the glass that cannot be washed away. Drip tray is an option that can divert water a bit outside the railing and glazing.

If you have questions or want to purchase additional balcony add-ons such as sealing strips, drip trays, or blinds, don't hesitate to contact us at Alnova Balkongsystem +46 10-16 13 400



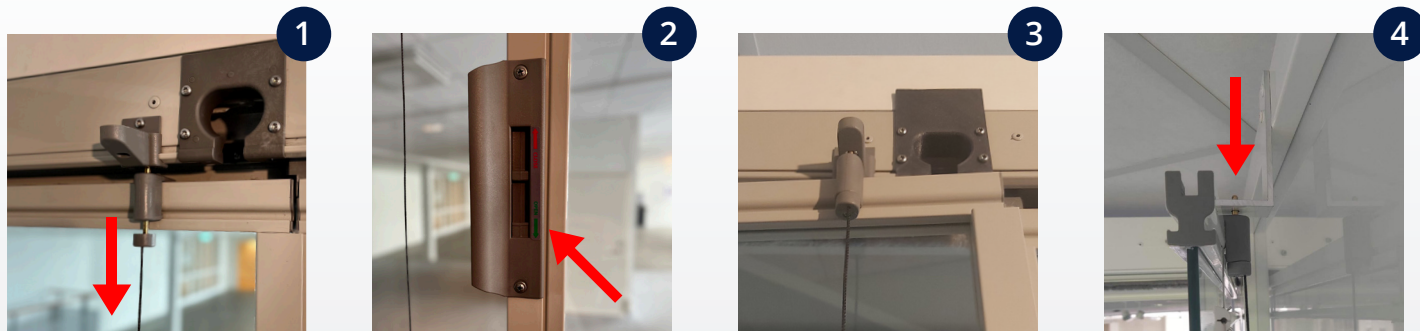
## NoveLine Slim Våningshög

Manage your glazing

### Open the first glass door

*For optimum child safety, the glazing is equipped with a two-handed grip.*

To open the first door of the enclosure, pull the string of the upper opening detail downward **(1)** while ensuring both handles are in the open green position **(2)** and pulling the glass door inward. You can either set the first glass door in a ventilating position by fitting the pin of the opening detail into the intended hole **(3)**, or fully open the glass door. Lock the first glass door with the locking pin in the intended hole on the roof angle **(4)**.



### Open the remaining glass doors

Slide the next door into the open position **(5)**. The panel is kept under pressure against the hinged side throughout the entire opening process and is pulled inward towards the balcony when it reaches the correct position **(6)**. The other doors hook onto the previous door through the locking mechanism at the top of the door **(7)**. All doors in the section are placed next to each other for a panoramic view **(8)**.



### Closing the glass system

To close the glass doors, repeat the procedure in reverse.

**Attention!** To prevent damage to the glazing system, keep the glazing system closed in moderate and stronger wind conditions.